

*New Mexico  
Ornithological Society  
Field Notes*



*Volume 55, Number 1, Winter 2015 - 2016*

NEW MEXICO ORNITHOLOGICAL SOCIETY FIELD NOTES

Volume 55, Number 1, Winter 2015-2016

1 December 2015 – 29 February 2016

A quarterly publication of the New Mexico Ornithological Society

**ISSN 0898-9443**

EDITORIAL STAFF

Sartor O. Williams III, *Editor*

William H. Howe, *Assistant Editor*

EDITORIAL OFFICE

Southwest Natural History Institute

1819 Meadowview Drive NW

Albuquerque, New Mexico 87104-2511

([sunbittern@earthlink.net](mailto:sunbittern@earthlink.net))

*Reporting Observations:* All individuals interested in birds in New Mexico are encouraged to submit their observations to *NMOS Field Notes*. Especially solicited are records of uncommon species, nesting birds, and early, late, or out-of-season/range birds. Records should be submitted in taxonomic order and should include species name, date, exact location, numbers of birds, age, sex, and color morph (if applicable), and name and contact information of observer. Details are necessary for unusual records; these may be submitted on a report form (available from the address above), but any written format is acceptable. Photographic documentation is strongly encouraged.

NEW MEXICO ORNITHOLOGICAL SOCIETY

(*Founded 1962*)

The New Mexico Ornithological Society was organized to gather and disseminate accurate information concerning the bird life of New Mexico; to promote interest in and appreciation of the value of birds, both aesthetic and economic, to further effective conservation of the state's avifauna; to facilitate opportunity for acquaintance and fellowship among those interested in birds and nature; and to issue publications as a means of furthering these ends.

*Membership and Subscriptions:* Membership in the New Mexico Ornithological Society is open to anyone with an interest in birds. Memberships are for a calendar year and annual dues are payable 1 January. Dues are: Regular Membership \$20; Family \$30; Student \$10; Supporting \$50; Life \$500. Address for the New Mexico Ornithological Society: P. O. Box 3068, Albuquerque, NM 87190-3068; [www.nmbirds.org](http://www.nmbirds.org).

**Front cover:** Northern Shrike (*Lanius excubitor*), first-winter, 10K Trailhead near Sandia Crest, Bernalillo Co., New Mexico, 3 December 2015 (see page 10). Photograph by William E. Maley.

**Back cover:** Greater Roadrunner (*Geococcyx californianus*) with crawfish, near Stanley, Santa Fe County, New Mexico, 11 January 2016 (see page 8). Photograph by Roger Clark.

## WINTER SEASON 2015-2016

Winter 2015-2016 began with several dramatic winter storms in December, which confounded several Christmas Bird Counts, but progressed into gradually drier and warmer conditions as January and February unfolded. Birding was steady, if unspectacular, with several rarities continuing from the fall season, plus discovery of a few seasonal rarities to add spice. By February, a number of resident species were busily engaged in courtship and other breeding activities.

### Localities and Counties

Abiquiu, Lake, <i>Rio Arriba</i>	Guadalupe Mts., <i>Eddy</i>
Aguirre Springs, <i>Doña Ana</i>	Hermosa, <i>Sierra</i>
Alameda, <i>Bernalillo</i>	Holloman Lake, <i>Otero</i>
Albuquerque, <i>Bernalillo</i>	Jal, <i>Lea</i>
Algodones, <i>Sandoval</i>	La Cieneguilla, <i>Santa Fe</i>
Angel Fire, <i>Colfax</i>	Lake Avalon, <i>Eddy</i>
Anapra, <i>Doña Ana</i>	Lake Roberts, <i>Grant</i>
Animas, Valley, <i>Hidalgo</i>	Las Cruces, Dam, <i>Doña Ana</i>
Belen, <i>Valencia</i>	Las Palomas, <i>Sierra</i>
Bill Evans Lake, <i>Grant</i>	Las Vegas, NWR, <i>San Miguel</i>
Bitter Lake NWR, <i>Chaves</i>	La Union, <i>Doña Ana</i>
Bosque del Apache NWR, <i>Socorro</i>	Lordsburg, Playa, <i>Hidalgo</i>
Bottomless Lakes SP, <i>Chaves</i>	Los Alamos, <i>Los Alamos</i>
Brantley Lake, Dam, <i>Eddy</i>	Loving, <i>Eddy</i>
Buckman, <i>Santa Fe</i>	Luis Lopez, <i>Socorro</i>
Caballo Lake, Dam, <i>Sierra</i>	Maljamar, <i>Lea</i>
Cannon AFB, <i>Curry</i>	Mangas Springs, <i>Grant</i>
Carlsbad, <i>Eddy</i>	Maxwell, NWR, <i>Colfax</i>
Carlsbad Caverns NP, <i>Eddy</i>	McMillan Dam, <i>Eddy</i>
Cedar Crest, <i>Bernalillo</i>	Mesilla, Park, <i>Doña Ana</i>
Chama, <i>Rio Arriba</i>	Mesilla Bosque SP, <i>Doña Ana</i>
Cherry Creek CG, <i>Grant</i>	Milnesand, <i>Roosevelt</i>
Cherry Lake, <i>Mora</i>	Morgan Lake, <i>San Juan</i>
Cimarron, <i>Colfax</i>	Navajo Dam, <i>San Juan</i>
Clayton, Lake, <i>Union</i>	north <i>Roosevelt</i> trap (NRT), <i>Roosevelt</i>
Cliff, <i>Grant</i>	Nutt, <i>Luna</i>
Clovis, <i>Curry</i>	Ohkay Owingeh Pueblo, <i>Rio Arriba</i>
Cochiti Lake, <i>Sandoval</i>	Organ Mts., <i>Doña Ana</i>
Conchas Lake, Dam, <i>San Miguel</i>	Orilla Verde, <i>Taos</i>
Corrales, <i>Sandoval</i>	Peloncillo Mts., <i>Hidalgo</i>
Deming, <i>Luna</i>	Pilar, <i>Taos</i>
Derry, <i>Sierra</i>	Pinos Altos, Mts., <i>Grant</i>
Elephant Butte, Lake, Dam, <i>Sierra</i>	Placitas, <i>Sandoval</i>
Eunice, <i>Lea</i>	Portales, <i>Roosevelt</i>
Farmington, Lake, <i>San Juan</i>	Radium Springs, <i>Doña Ana</i>
Flora Vista, <i>San Juan</i>	Rattlesnake Springs, <i>Eddy</i>
Fort Craig, <i>Socorro</i>	Redrock, <i>Grant</i>
Fort Sumner, <i>De Baca</i>	Rinconada, <i>Rio Arriba</i>
Gila Bird Area, <i>Grant</i>	Rio Rancho, <i>Sandoval</i>
Glenwood, <i>Catron</i>	Rodeo, <i>Hidalgo</i>

Roswell, *Chaves*  
 San Antonio, *Socorro*  
 Sandia Crest, Park, *Bernalillo*  
 Sandia Mts., *Bernalillo/Sandoval*  
 San Marcial, *Socorro*  
 San Simon Cienega, *Hidalgo*  
 Santa Fe, *Santa Fe*  
 Santa Teresa, *Doña Ana*  
 Sevilleta NWR, *Socorro*  
 Silver City, *Grant*  
 Six Mile Dam, *Eddy*  
 Spring Canyon SP, *Luna*

Stanley, *Santa Fe*  
 Storrie Lake, *San Miguel*  
 Stubblefield Lake, *Colfax*  
 Sumner Lake, Dam, *De Baca*  
 Taos, Ski Valley, *Taos*  
 Tucumcari, *Quay*  
 Tularosa, *Otero*  
 Ute Lake, *Quay*  
 Uvas Valley, *Doña Ana/Luna*  
 Watrous, *Mora*  
 White Signal, *Grant*  
 Williamsburg, *Sierra*

### Standard Abbreviations

AFB	Air Force Base	RGV	Rio Grande Valley
Bosque NWR	Bosque del Apache NWR	SP	State Park
BLNWR	Bitter Lake NWR	UNM	Univ. of New Mexico
BBS	Breeding Bird Survey	USFWS	U.S. Fish & Wildlife Service
CBC	Christmas Bird Count	WMA	Wildlife Management Area
CCNP	Carlsbad Caverns NP	WSMR	White Sands Missile Range
CG	Camp Ground	♂	male (represents sword & shield of Mars)
Cr.	Creek	♀	female (represents mirror of Venus)
EBL	Elephant Butte Lake	ad(s).	adult(s)
GBA	Gila Bird Area	subad(s).	subadult(s)
L.	Lake	imm(s).	immature(s)
LVNWR	Las Vegas NWR	juv(s).	juvenile(s)
MSB	Museum of Southwestern Biology	sp.	species
Mt(s).	Mountain(s)	m.ob.	many observers
NAPI	Navajo Agricultural Products Industry	m.ph.	many photographs
NM	National Monument	v.o.	various observers
NMSU	New Mexico State Univ.	+	others; et al.
NP	National Park	*	written details provided
NRT	north <i>Roosevelt</i> trap	**	photo or tape provided
NWR	National Wildlife Refuge	***	specimen obtained
PA	Picnic Area		
R.	River		
RGNC	Rio Grande Nature Center		

## Initialed Observers

DA Danny Akers  
MJA Michael J. Andersen  
JPB Jonathan P. Batkin  
MJB Matthew J. Baumann  
GMB Grant M. Beauprez  
DAB Dan Allen Belcher  
CLB Charles L. Black  
CMB Celestyn M. Brozek  
RC Roger Clark  
DJC David J. Cleary  
DC Dylan Cuellar  
WTE Wyatt T. Egelhoff  
GAF Gerald A. Friedman  
BRF Bernard R. Foy  
DLH David L. Hawksworth  
CLH Charles L. Hayes  
NEH Nancy E. Hetrick  
MOH Michael O. Hilchey  
WJ-W Will Jaremko-Wright  
ABJ Andrew B. Johnson  
DJK David J. Krueper  
CGL Carl G. Lundblad  
WEM William E. Maley  
LKM Larry K. Malone  
SEM Sonja E. Mendoza  
BLM Bernard L. Morris  
RN Robert Nieman  
JRO Jerry R. Oldenettel

JEP John E. Parmeter  
NDP Nicholas D. Pederson  
BP Bryan Pfeiffer  
TR Tim Reeves  
WDR W. Douglas Robinson  
CMR Christopher M. Rustay  
CIS Catherine I. Sandell  
JIS Jeffery I. Sanchez  
MTS Marcy T. Scott  
JWS John W. Shipman  
DMS Donna M. Simonetti  
RSS Roland S. Shook  
NGS Nancy G. Stotz  
JBS Jarrod B. Swackhamer  
WMT Wayne M. Treers  
MLW Mark L. Watson  
REW Richard E. Webster  
SW Steve West  
WFW William F. West  
DW Debra Whitecotton  
CJW Cole J. Wolf  
JW Jay Wilbur  
JEZ James E. Zabriskie  
BRZ Barry R. Zimmer

## SPECIES ACCOUNTS

**Greater White-fronted Goose**—Small numbers were present at Albuquerque's Valle de Oro NWR Dec-Feb, including a high 11 on 5 Dec (DLH). One was northwest to Farmington's Berg-Animas Park 14-16 Feb (TR\*\*).

**Cackling Goose**—Scarce in *Rio Arriba*, one was at the Ohkay Owingeh Pueblo lakes 20 Feb (JEP); 3 were at Pojoaque, *Santa Fe* 16 Jan (WTE\*).

[**Mute Swan**]**—**An ad. was at Albuquerque's Tingley ponds 6 Dec-29 Feb (m.ob., m.ph.).

**Tundra Swan**—An impressive season found 2 in the Maxwell area 4-22 Dec (MLW, JEP\*, RC\*\*, CMR), one at Watrous and 3 at Cherry L. 4 Dec (MLW), a high 7 at Sumner L. 7 Dec (MLW\*\*), 6 at BLNWR 12 Jan (MLW), 2 at Bottomless Lakes SP 12 Jan (MLW) and singles at Rio Rancho 12 Dec (CLH\*) and Bosque NWR 3 Dec-1 Jan (CIS\*\*); latest were 2 at LVNWR 24 Feb (WJ-W).

**Wood Duck**—Peripheral reports included 2 at Ojo Caliente, *Taos* 10 Jan (CMR), 2 at Clayton L. 30 Dec (CMR), 10 at Clovis 19 Feb (GMB), 2 at Glenwood 14 Feb (DLH), and 8 at the Inn of the Mountain Gods, *Otero* 11 Dec (L. & S. Ingram\*\*).

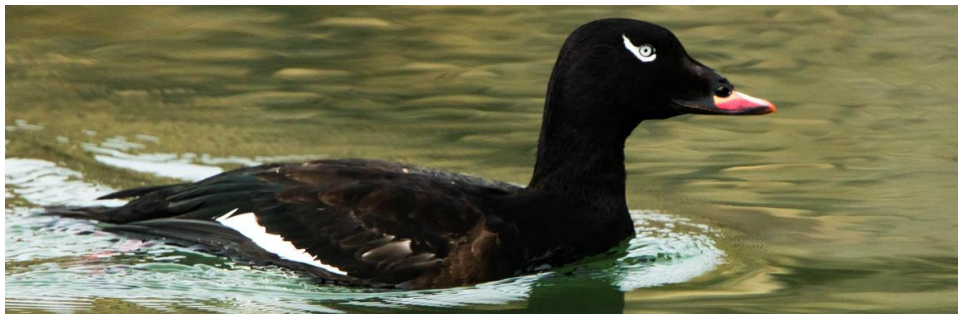
**Eurasian Wigeon**—An ad. ♂ was at the Clovis treatment ponds 8 Jan-5 Feb (GMB\*, JEP\*); the species has occurred there in seven of the past nine winter seasons.

**Blue-winged Teal**—Noteworthy for mid-winter, a ♂ was at Rodeo 2 Jan (DLH).

**Cinnamon Teal**—Noteworthy for mid-winter, a ♂ was at Bosque NWR 4 Jan (DLH) and 3 were near Williamsburg 14 Jan (DJC\*\*).

**Surf Scoter**—An ad. ♂ was at Storrie L. 9-22 Dec (WJ-W\*\*, WFW, D. Hommert\*\*, WTE\*\*, JEP\*, CMR); there are records for 26 of New Mexico 33 counties.

**White-winged Scoter**—Rare in New Mexico, an ad. ♂ was below Navajo Dam at Simon Canyon 19 Feb (B. Ryan\*\*).



White-winged Scoter, Simon Canyon, San Juan County,  
19 February 2016. Photograph by Brad Ryan.

**Long-tailed Duck**—An imm. was at Stubblefield L. 19-20 Dec (JEP\*, RC\*\*). An ad. ♂ was at Conchas L. 7-21 Feb (CMR\*, NEH\*\*, WJ-W\*, BLM).

**Common Goldeneye**—Noteworthy for the southern locales were one at L. Roberts 23 Jan (JBS\*\*), 4 at Holloman L. 23 Jan (JEP) and one at the Jal treatment ponds 5 Dec (JRO).

**Barrow's Goldeneye**—Recently regular in the upper RGV, reports included up to 4 at Orilla Verde upstream from Pilar 10 Jan-11 Feb (CMR\*, RC\*\*, WTE\*\*, v.o.), one near Rinconada 16 Dec (WTE\*\*), and up to 12 in the vicinity of Ohkay Owingeh Pueblo 17 Jan-28 Feb (m.ob., GAF\*\*, BLM\*\*). East of the mountains, a ♀ was at Storrie L. 22 Dec (CMR\*, WTE\*\*).

**Lesser Prairie-Chicken**—Nine were at a display lek at Milnesand on the early date of 18 Feb (GMB).

**Red-throated Loon**—Continuing from late Nov, the one at Cochiti L. persisted to 29 Dec (m.ob., RC\*\*, NEH\*\*, BRF\*\*, MJB\*\*, MJA\*\*).

**Pacific Loon**—One was at Bosque NWR 6 Jan (C. Wu\*\*); on the same date, another was at the Inn of the Mountain Gods, *Otero* (L. & S. Ingram\*\*).

**Horned Grebe**—Small numbers were reported in the Chama, Rio Grande, Canadian, and Pecos valleys; high count was 10 at Abiquiu L. 28 Jan (RC).

**Red-necked Grebe**—One was seen at Ute L. 4 Jan (DA\*); if accepted, it would provide a first for *Quay*.

***Aechmophorus* grebes**—The mid-winter peak count at EBL was 5500 on 15 Jan (MLW).

**Neotropic Cormorant**—Noteworthy for *Lea*, one was at Jal L. 5 Feb (SW\*).

**Brown Pelican**—Single ads. were at Bill Evans L. 26-27 Dec (B. Norris, G. Weyburne\*\*), EBL 30 Jan-4 Feb (DJC, BLM\*), and Brantley L. 16-23 Dec (RN\*\*, CLB).



Brown Pelican, Bill Evans Lake, Grant County,  
27 December 2015. Photograph by Grant Weyburne.

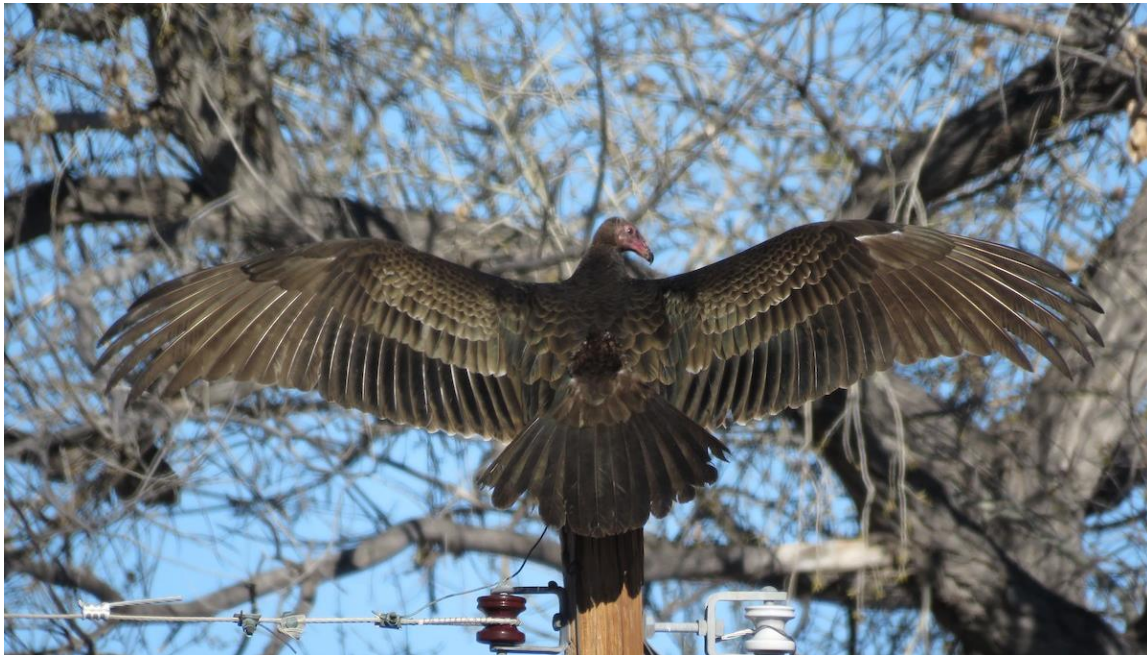
**American Bittern**—A high 3 were at BLNWR 19 Dec (JIS); one was below Brantley Dam 1 Dec (MJB) and 8 Jan (RN\*\*).

**Great Egret**—Considered common along the lower Pecos River this season (SW), including up to 15 at Brantley L. 5-12 Dec (JEP, RN) and 11 at McMillan Dam 23 Jan (RN). In the RGV, one was north to Belen 27 Jan (JRO).

**Cattle Egret**—Two at L. Avalon 16 Dec (SW) provided the only report.

**Green Heron**—Noteworthy for winter, one was at L. Roberts 9-30 Jan (B. R. Dolton\*\*, LKM, JBS\*\*); undetailed was one reported at Mesilla 26 Dec (S. Trevathan).

**Turkey Vulture**—Late were singles at Elephant Butte 14 Dec (DJC) and Carlsbad 15 Dec (SW). Mid-winter reports were one near Cliff 13 Jan (JBS\*\*) and 8 at Roswell 6 Jan (P. Collins).



Turkey Vulture, near Cliff, Grant County, 13 January 2016. Photograph by Jarrod B. Swackhamer.

**White-tailed Kite**—One was north to the dry upper portion of EBL 9-23 Feb (DJC\*\*, JEP\*); farther south, one to 2 were in the middle Animas Valley 2-26 Jan (m.ob., C. D. Hathcock\*\*, BLM\*\*) and one was at Mesilla Bosque SP 18-28 Jan (JW\*\*, BLM).

**Red-shouldered Hawk**—Under review is one described in the Corrales bosque 14 Jan (G. Garber\*).

**Rough-legged Hawk**—A juv. was south to EBL 5 Jan (DJC\*\*); an ad. was there 19 Jan (DJC\*), where it and 13 **Red-tailed Hawks** were concentrated about the rapidly-filling upper marsh area.

**Sandhill Crane**—Over a period of 4-5 hours, some 5000 were counted flying north over Corrales 20 Feb (DJK).

**Black-necked Stilt**—Always noteworthy in winter, 15 were along the Rio Grande near Anapra 1 Jan (MTS, JEZ).

**American Avocet**—Four were north to Caballo L. 8 Dec-21 Jan (DJC\*\*).

**Snowy Plover**—One was late at BLNWR 19 Dec (JIS). Four were in the Laguna Grande area east of Loving 18 Dec (RN\*\*), where one lingered to 15 Jan (RN\*\*).

**Spotted Sandpiper**—One wintered at the GBA 14 Dec-19 Jan (RSS).

**Greater Yellowlegs**—Noteworthy for *Grant*, 2 were at the GBA 26 Dec (JBS\*\*).

**Dunlin**—Two to 5 lingered at Caballo L. 8 Dec-4 Jan (DJC\*); undetailed were 4 reported at Bosque NWR 18 Jan (R. Koehler).

**Least Sandpiper**—North for the season were singles at Morgan L. 20 Dec (CJW\*) and Williams Playa near Clovis 20-21 Dec (CMR\*, GMB\*). Noteworthy for *Luna*, 3 wintered at the Deming treatment ponds 3 Dec-29 Feb ((LKM).

**Western Sandpiper**—One was late at Deming 3 Dec (LKM).

**Red Phalarope**—Late was one at Brantley L. 1 Dec (MJB\*).



Lesser Black-backed Gull, San Juan County Landfill near Flora Vista, 6 January 2016. Photograph by Timothy Reeves.

**Mew Gull**—Near Farmington, an ad. was near Flora Vista at L. Luther 16 Dec (TR\*\*) and presumably a different ad. was at the San Juan County Landfill southeast of Flora Vista 18 Dec (TR\*\*). In the RGV, single ads. were at the Alameda bridge 28 Dec-1 Jan (DC\*\*, JEP\*) and EBL 1 Jan (CMR\*) & 13 Feb (JEP\*).

**Thayer's Gull**—Under review is an ad. described at EBL 1 Jan (CMR\*).

**Lesser Black-backed Gull**—An ad. was at the San Juan County Landfill southeast of Flora Vista 6 Jan (TR\*\*) and a first-cycle individual was at EBL 27 Feb (WTE\*\*).

**Glaucous-winged Gull**—A first-cycle individual at Brantley L., first seen 22 Nov, continued into Dec (MJB\*, JEP\*, JRO), where last documented 16 Dec (RN\*\*) and last reported 22 Dec (eBird). This is only the third of this species to find its way to New Mexico, and apparently the first to survive the experience.

**Inca Dove**—First reported in Oct, the 2 at Barranca near Abiquiu continued to 13 Dec (RC\*\*, BRF\*\*, WTE\*\*). Four were north to Clovis 20 Dec (CMR) and 2 were at Silver City 15 Feb (JBS\*\*). Generally small numbers were reported across the south in *Hidalgo*, *Sierra*, *Doña Ana*, and *Eddy*, except for an unusually high count of 63 reported on the Las Cruces CBC 19 Dec (WMT).

**White-winged Dove**—One was north to Clayton 31 Dec (CMR), where now considered regular in winter. Noteworthy north to *Taos* was one at Pilar 10 Jan (CMR).

**Greater Roadrunner**—Ever adaptable, one hunting the snow-swept plains near Stanley captured and consumed a (non-native) crawfish from a snowmelt filled ditch 11 Jan (RC\*\*).

**Long-eared Owl**—Winter roosts included 4 birds at Sevilleta NWR 30 Jan (DLH) and 10 at Dripping Springs east of Las Cruces 19 Dec (JW).

**Short-eared Owl**—One to 2 were in the Uvas Valley in *Luna* south of Nutt 8 Jan (JEP) and 6 Feb (WTE\*). One was in Mason Draw on the Las Cruces West Mesa 16 Feb (NGS\*\*). One was reported on the Roswell CBC 19 Dec (*fide* JIS).

**Northern Saw-whet Owl**—Up to 3 were vocal at Cedar Crest 6-24 Feb (WEM); in the nearby Sandia Mts., singles were noted at four locales along the highway to the crest 6 Dec-24 Feb (m.ob.).

**White-throated Swift**—January reports included one in the Animas Valley 1 Jan (A. M. Craig, N. Moore-Craig), 3 at Spring Canyon SP, Florida Mts. 19 Jan (LKM), 24 along the Rio Grande at Derry 4 Jan (DLH), 8 near Radium Springs 6 Jan (MTS, JEZ), and 11 in Slaughter Canyon, Guadalupe Mts. 17 Jan (RN).

**Magnificent Hummingbird**—One at Pinos Altos 6 Jan (JBS) provided the only report.

**Anna's Hummingbird**—Continuing from Nov, the ♂ at Clovis was last reported 5 Feb (JEP\*). A ♀ wintered at Elephant Butte 6 Dec-16 Jan (DJC\*\*). Undetailed were 2 reported on the Las Cruces CBC 19 Dec (WMT).

**Broad-tailed Hummingbird**—Two ♀♀ near Radium Springs 30 Nov continued into the winter, one to 8 Jan and the other through 24 Mar (MTS, JEZ). A young ♂ was at Las Cruces 27 Dec-6 Jan (DMS\*\*), where an ad. ♂ was present 6 Jan only (DMS\*\*).

**Rufous Hummingbird**—Two undetailed ones were reported on the Las Cruces CBC 19 Dec (WTM).

**Broad-billed Hummingbird**—The ♂ at Clovis, first seen 13 Nov, continued through Dec and was last reported 16 Jan (JEP\*\*). One on the Las Cruces CBC 19 Dec (WMT) provided the only additional report.

**Belted Kingfisher**—One was making a meal of a (non-native) crawfish at the Ohkay Owingeh lakes 27 Feb (GAF\*\*).

**Red-headed Woodpecker**—East of expected was an ad. at Tularosa 2 & 17 Jan (SEM, CMR), where an ad. had also been present the previous Jan.

**Golden-fronted Woodpecker x Red-bellied Woodpecker**—A hybrid ♀, first found at Portales 28 Oct, was documented there again 15 Jan-21 Feb (T. D. Watkins\*\*).

**Red-bellied Woodpecker**—Continuing from 25 Oct, a ♂ in the Rattlesnake Springs area continued through Dec-Feb (m.ob., RN\*\*, JRO\*\*) and into Mar.

**Yellow-bellied Sapsucker**—One was west to Mangas Springs 13 Jan (JBS\*\*) and another was farther west to the Big Creek area, Peloncillo Mts. 3 Jan (MJB\*, NDP\*\*).

**Red-breasted Sapsucker x Red-naped Sapsucker**—Apparent hybrids were singles in the Sandia Mts. at Doc Long Picnic Area 14 Feb (NEH\*\*) and in the Black Range near Hermosa 20 Feb (DJC\*\*).

**Downy Woodpecker**—Several were south of expected in the RGV, including 4 in the bosque near Fort Craig 19 Feb (ABJ, MJB), one at Las Palomas 26 Dec (SEM), and 2 at Las Cruces 14 Jan (C. Turner\*\*).

**American Kestrel**—Getting an early start on the season, a pair was copulating at Luis Lopez 28 Jan (JWS\*\*).

**Merlin**—One was chasing **Cave Swallows** at CCNP as they left the main Carlsbad Cavern 19 Feb (SW).

**Peregrine Falcon**—Now a regular wintering species across the southern half of New Mexico; this season produced Jan reports north to Los Alamos, Santa Fe, and Albuquerque.

**Monk Parakeet**—Up to 6 were near Santa Teresa 17 Feb (J. M. Groves, WTE). Given that an established breeding population nests in El Paso within 200 m of the state line, the status of this species in *Doña Ana* deserves study.

**Least Flycatcher**—One lingered at Rattlesnake Springs 3-4 Dec (JRO\*\*).

**Hammond's Flycatcher**—Singles were documented at Cedar Crest 6 Dec (B. Henderson\*\* & audio), at Caballo L. 26 Dec (DLH\* & audio), and near Cliff 26 Dec (JBS\*, J. DeMoss\*\*) where there were also 2 unidentified empids (RSS).

**Dusky Flycatcher**--Singles were documented along the Rio Grande at Buckman 12 Jan (RC\*\*), Albuquerque's South Valley 10-16 Jan (DLH\* & audio), near San Marcial 30 Dec (MJB\*, ABJ), and Redrock 29 Feb (JBS\* & audio).

**"Western" Flycatcher**—A silent "western" was north of Radium Springs 9 Jan (BRZ\*\*); it was attracted to recorded calls of Pacific-Slope but not to calls of Cordilleran. Another "western" was south of Radium Springs 13 Jan-23 Feb (MTS, JEZ).

**Northern Shrike**—One found its way up to the 10K Trailhead near Sandia Crest 1-10 Dec (D. Ferguson, WEM\*\*).

**Bell's Vireo**—One was vocal at La Union 25 Dec (DAB), where the species has occurred in early winter in recent years.

**Plumbeous Vireo**—One at Las Cruces 19 Feb (JW) may have wintered locally.

**Hutton's Vireo**—Noteworthy for the desert, one was at Deming's Mountain View Cemetery 29 Dec-4 Jan (LKM, CMR, MJB\*\*). Maintaining an Organ Mts. presence, one was at Aguirre Springs 12 Feb (NGS).

**Pinyon Jay**—One wandered down to the GBA 14 Jan (RSS).

**Tree Swallow**—Earliest reports were 6 at Caballo L. 4 Feb (DJC\*\*) and 2 at Holloman L. 13 Feb (LKM).

**Violet-green Swallow**—Early were 11 along the Gila R. near Bill Evans L. 24 Feb (JBS\*\*).

**Northern Rough-winged Swallow**—Surprising were 6 at Anapra 1 Jan (MTS, JEZ); earliest migrants were singles at Las Cruces 11 Feb (NGS) and Lordsburg 14 Feb (DLH) and 3 at San Antonio 18 Feb (JWS).

**Barn Swallow**—Early were 2 along the Gila R. near Bill Evans L. 24 Feb (JBS\*\*).

**Red-breasted Nuthatch**—One was east to the Eunice cemetery 6 Dec (JRO).

**House Wren**—One was late at NRT 20 Dec (CMR). North for the season was one that wintered at Algodones 9 Jan-28 Feb (DLH)

**Pacific Wren**—Nicely documented was one in the Pinos Altos Mts. at Cherry Creek CG 27-28 Jan (JBS\*\* & audio). Under review are reports from Los Alamos Canyon, *Los Alamos* 16 Jan (C. Martin\*) and Bandelier NM, *Sandoval* 14 Feb (M. Williams\*).

**Winter Wren**—Relatively plentiful from the RGV eastward Dec-Feb, with singles reported from 12 sites in *Santa Fe*, *Sandoval*, *Bernalillo*, *Socorro*, *San Miguel*, *Lea*, and *Eddy* and 2 in the Brantley L. area 16 Dec & 8 Jan (RN).

**Marsh Wren**—North of expected for winter were singles at Santa Fe 1-31 Jan (BRF), Las Vegas 29 Jan (WJ-W) and Ute L. 15 Jan (JRO).

**Carolina Wren**—Continued to make its presence known in the state, with one 5 km northeast of Clayton 31 Dec (DLH\*) & 8 Jan (JRO\*\*), 2 continuing at Ute L. 11 Dec (JRO\*\*), one at Belen 25 Dec (CMR\*), and at least one continuing at Bosque NWR 19 Dec (A. Warner audio, V. Dern).

**Blue-gray Gnatcatcher**—Two at Las Cruces in the Las Cruces Arroyo 16 Dec (NGS\*\*) provided the only report.

**Golden-crowned Kinglet**—One was east to Clovis 19 Dec (CMR\*).

**Eastern Bluebird**—West to *Grant* were up to 3 at Mangas Springs 29 Dec-15 Feb (JBS\*) and one at the GBA 26 Feb (JBS\*\*). In the upper RGV, 14 were upstream from Pilar 10 Jan (CMR\*) and 12 were near Rinconada 12 Jan (DC) while one was northwest in the Chama River Valley to Abiquiu 28 Jan (RC\*).

**Hermit Thrush**—The species has been found wintering farther and farther north in the state in recent years; this season singles were found at Paradise Canyon near Clayton 30 Dec (CMR\*) and at Fred Baca Park in Taos 20 Jan (R. D'Antonio).

**Gray Catbird**—As in recent winters, this species was again in evidence, with singles at Ute L. 15 Jan (JRO), Conchas L. 12-27 Feb (WJ-W, JEP), Fort Sumner's Bosque Redondo L. 9-19 Jan (GMB\*\*), La Cieneguilla 20-24 Dec (WTE\*), and Cienega Canyon, Sandia Mts. 30 Jan (CMR\*) through 15 Feb (WEM\*\*, NEH\*\*, CMB\*\*).

**Curve-billed Thrasher**—At the northern fringes of the range were singles at Grants, *Cibola* 15 Feb (J. Boyden), Lyden, *Rio Arriba* 14 Feb (M. Peterson), and Wagon Mound, *Mora* 29 Dec (J. Henderson).

**Brown Thrasher**—One to 3 were reported from at least 19 locales in 12 counties from the RGV eastward Dec-Feb (m.ob., m.ph.).

**Bendire's Thrasher**—Those reported with details were 4 at two sites west of Lordsburg 21-22 Feb (C. Bear, A. Salas) and one near Rodeo 23 Feb (C. Bear).

**Crissal Thrasher**—In the upper RGV, up to 2 were in the Buckman area 16-21 Jan (BRF\*\*, JRO); in the east, one was north in the Pecos Valley to BLNWR 17 Feb (B. Dale\*\*) and another was east to the Conoco Pond near Maljamar 13 Feb (RN).

**Northern Mockingbird**—North for the season, up to 4 were at Ute L. 4-22 Jan (DA, JRO, JEP), one was on the Cimarron CBC 20 Dec (M. J. Kelly), and 2 were on the Orilla Verde CBC 16 Dec (S. Knox\*\*).

**Sprague's Pipit**—January reports included singles in the Uvas Valley south of Nutt 8 Jan (JEP\*) & 30 Jan (WTE) and in the s. Animas Valley 2 Jan (MJB).

**Olive Warbler**—In *Grant*, a group of 9 was near Seventy-Four Mt. 9 Dec (BP\*), 2 were at Cherry Creek CG 16-17 Feb (JBS\*\*), 2 were along the Tadpole Ridge trail 28 Feb (K.

Dayer\*), and 2 were at the Sheep Corral road turnoff 28 Feb (JBS\*\*). In *Hidalgo*, one was in Clanton Canyon, Peloncillo Mts. 15 Feb (DLH).

**Chestnut-collared Longspur**—Sizable flocks were reported in the southwest, including 500 along Whitewater Road east of White Signal 3 Feb (JBS\*\*).

**McCown's Longspur**—Some 100 were near Ned Houk Park north of Clovis 12 Feb (GMB).

**Orange-crowned Warbler**—Singles were north to Redrock 18 Jan (JBS\*\*), Albuquerque's Old Town 20 Dec (D. Weissman\*\*), and Clovis 19-20 Dec (CMR\*, DW\*\*). In the south, one to 2 were at 11 locales in *Luna*, *Sierra*, *Doña Ana*, and *Eddy* 3 Dec-16 Feb (m.ob.).

**Common Yellowthroat**—One was north to Roswell 19 Dec (WFW).

**Northern Parula**—One was a surprise in Albuquerque's South Valley 16 Dec (L. Ladwig\*\*).

**Pine Warbler**—One that spent 1-30 Jan at Deming's Mountain View Cemetery (CMR\*, MJB\*\*, CGL\*\*, JEP\*, WTE\*) furnished the second winter record for that locale.

**Yellow-throated Warbler**—Providing an *Otero* first, at least one was at Alamogordo 2-23 Jan (WMT\*, F. Wilson\*\*, JRO\*\*, CMR\*, NEH\*\*, JEP\*).



Yellow-throated Warbler, Alamogordo, Otero County,  
14 January 2016. Photograph by Jerry R. Oldenettel.

**Painted Redstart**—Unexpected in New Mexico in winter, one was north of Cliff 20 Jan (JBS\*\*), specifically, along the Gila R. near its junction with Turkey Creek.

**Green-tailed Towhee**—Presumably an early migrant, one was north to Conchas L. 13 Feb (WJ-W\*\*).

**Abert's Towhee**—One singing at a ranch just northeast of Rodeo 27 Feb (REW) provided a local first. Two were seen at San Simon Cienega 24 Jan (MJB), where the species is resident.

**Cassin's Sparrow**—Difficult to document in winter, one was north to Ute L. 9 & 22 Jan (JEP, JRO\*\*), and one was at the Grant County Airport near Silver City 4 Feb (JBS\*\*).

**American Tree Sparrow**—In the Santa Fe area, one was along the Rio Nambe at Jacona 27 Dec (BRF\*). South to *Bernalillo*, 2 were at the Alameda bridge 27-31 Dec (MOH, DC\*\*, A. P. Stewart\*\*) and one was at Albuquerque's Los Poblanos Open Space 27 Dec (D. W. Mehlman).

**Clay-colored Sparrow**—Late in the east was one lingering south of Cannon AFB 13 Dec (DW\*\*). Surprising for Jan, one was north to Albuquerque's Petroglyph NM 13 Jan (J. Shenot\*\*) and 25 Jan (WDR\*\*) through 28 Feb (D. Buckley).

**Brewer's Sparrow**—Wintered north to Albuquerque's Petroglyph NM Dec-Feb, including 3 on 17 Dec (S. Semanchuk\*\*), 8 on 11 Jan (MOH\*\*), and 9 on 25 Jan (WDR\*\*).

**Field Sparrow**—Northerly were singles at Conchas L. 13 Feb (WJ-W\*\*) and Ute L. 9 & 22 Jan (JRO, JEP\*).

**Black-chinned Sparrow**—Noteworthy for *Luna* were several that wintered at Spring Canyon SP in the Florida Mts., including 3 on 29 Dec (LKM) and 6 on 30 Jan (WTE, RC).

**Black-throated Sparrow**—Early for the northerly location were 6 at Conchas L. 13 Feb (WJ-W\*\*).

**Lark Bunting**—Noteworthy for the early date, some 890 were counted in two flocks in *Harding* north of Ute L. 7 Feb (CMR).

**Grasshopper Sparrow**—One was north to Ute L. 7 Feb (CMR\*). In *Grant*, up to 5 were in grasslands east of White Signal 7 Feb (JBS\*\*).

**Baird's Sparrow**—High counts were 3 along Whitewater Road east of White Signal 7 Feb (JBS\*\*), 7 in the Uvas Valley southeast of Nutt 4 Jan (MJB\*\*) plus 5 in a nearby Uvas Valley site 6 Feb (WTE\*), and 13 at two sites in the middle Animas Valley 3 Jan (CMR, MJB\*).

**Fox Sparrow**—Noteworthy for *Santa Fe*, a red one made a one day visit to La Cieneguilla 2 Dec (JPB\*\*). Others identified as red were singles at Luis Lopez 11 Jan (JRO), Rattlesnake Springs 6 Dec-14 Feb (RN), and Six Mile Dam 18 Dec-21 Feb

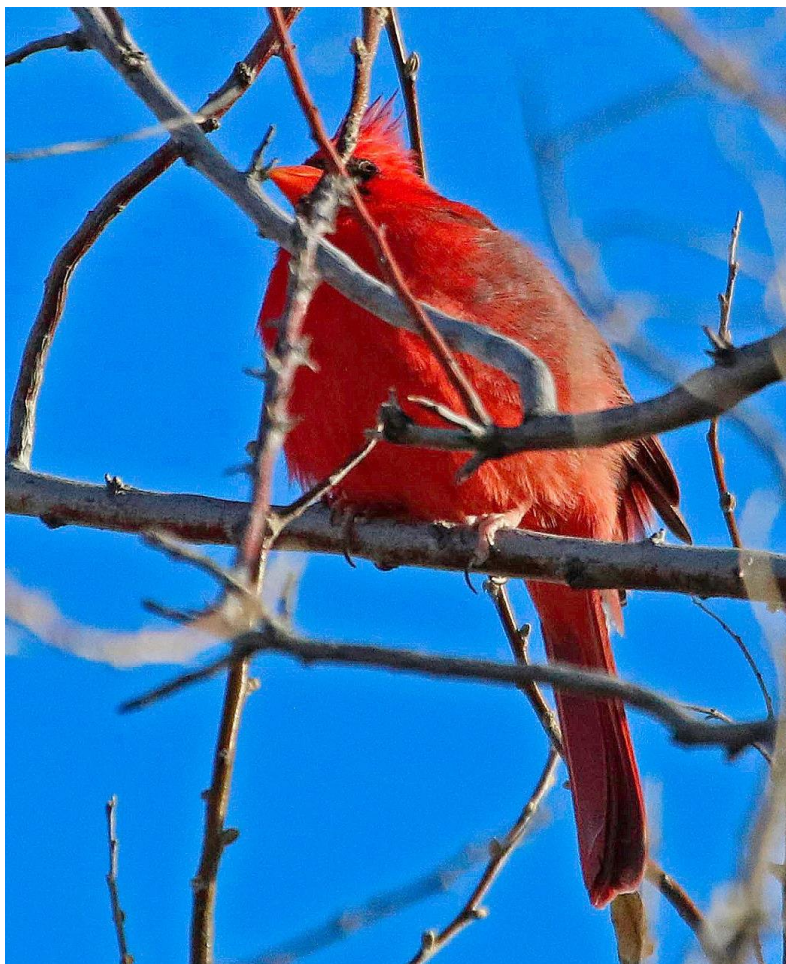
(RN\*\*), while others identified as gray or slate were singles at GBA 9 Dec (BP\*), Aguirre Springs 23 Jan (D. T. Meliopoulos\*), and Carlsbad 30 Dec-1 Jan (SW).

**Swamp Sparrow**—One was west to Mangas Springs 2-13 Jan (JBS\*\*). North for mid-winter were singles at Sumner Dam 16 Jan (JEP) and Ute L. 22 Jan (JEP). Rare in *Rio Arriba*, one was at the Ohkay Owingeh lakes 6 Dec (BRF\*\*) & 13 Dec (WTE\*).

**Harris's Sparrow**—Made a fair showing, with an imm. near Chama 28 Jan (RC\*\*), an ad. at Taos that was first seen 16 Nov and was still there 21 Feb (J. Lay\*\*), an ad. at Placitas 31 Dec-7 Jan (N. Comparato\*\*), at least one ad. at Albuquerque's Alameda bridge 30 Dec-26 Feb (JEP\*, WEM\*), an ad. near Cannon AFB 3-4 Dec (DW\*\*) and at least one imm. there 17 Dec-9 Feb (DW\*), and an ad. near Milnesand 16 Dec (DW\*).

**Golden-crowned Sparrow**—Scarce in eastern New Mexico, so noteworthy was one at Ute L. 4 Jan (DA\*) & 16 Jan (JRO\*\*). One in Albuquerque's North Valley 13-14 Dec (WEM\*\*, BLM) provided the only additional report.

**Northern Cardinal**—An ad. ♂ entertained many at the Albuquerque Botanical Gardens 30 Dec-28 Feb (K. Haller, m.ob., m.ph.). In the northeast, 3 were at Ute L. 9-22 Jan (JRO\*\*, JEP), 2 were near Tucumcari 17 Jan (JRO\*\*), and a ♂ was at Clovis 19 Dec (CMR, GMB). Noteworthy was a ♀ at a Carlsbad feeder 28 Dec (SW).



Northern Cardinal, Albuquerque, Bernalillo County,  
17 February 2016. Photograph by Jerry R. Oldenettel.

**Rusty Blackbird**—One west to La Cieneguilla 4-6 Dec (JPB\*\*, BRF\*\*) provided only the second *Santa Fe* record. Up to 6 at Williams Playa near Clovis 19-21 Dec (GMB\*\*, CMR\*) furnished a *Curry* first.



Rusty Blackbird, Williams Playa near Clovis, Curry County,  
19 December 2015. Photograph by Grant M. Beauprez.

**rosy-finches**—Flocks of varying sizes and compositions were reported in *Rio Arriba*, *Taos*, *Colfax*, *Mora*, and *Bernalillo*. A flock of 36 near Chama 28 Jan contained 31 **Brown-capped**s, 4 **Gray-crowned**s, and one **Black** (RC\*\*) and a flock at Angel Fire 31 Jan contained 170 **Brown-capped**s and 30 **Blacks** (G. Zientara\*) while a flock of 45 at Taos Ski Valley 17 Dec was composed almost entirely of **Blacks** and **Gray-crowned**s with but a single **Brown-capped** (WJ-W\*\*); **Blacks** and **Gray-crowned**s comprised the majority of the roughly 100 birds at Sandia Crest Dec-Feb (m.ob.). A flock of about 100 Rosy-Finches visited Chacon, *Mora* 1 Feb but were not identified to species (M. Bunker).

**Lesser Goldfinch**—One was singing at Santa Fe 13 Feb (BRF\*\*).

## ERRATUM

*NMOSFN* 54(4):62, Autumn 2015—**Black-throated Blue Warbler**: the record for one at Percha SP on 20 Aug 2015 is an error; the observer reported a Black-and-white Warbler, not a Black-throated Blue Warbler.

\* \* \*



**NEW MEXICO COUNTIES**

